



NOTTINGHAMSHIRE LOCAL HISTORY ASSOCIATION

NEWSLETTER

Working together: what we do best

Volume 2, Issue 5, January 2016

Hello

You probably know NLHA originally came into existence in the early 1950s as the Nottinghamshire Local History Council and was re-created in its current form in 1982.

Recently the Charities Commission has reviewed the types and forms of charitable organisations and the rules and duties associated with managing those organisations and as our own Constitution has not really changed since it was originated this seems to me to be a good time to review what we have, make the changes that we need and take advantage of the actual and potential benefits available to us by adopting a new Constitution as a charitable incorporated organisation (CIO).

Any changes that we do make to our Constitution will have to be agreed at an AGM and endorsed by the Charities Commission. I am currently in the process of reviewing our present constitution and aligning it with the standard, or default, template constitutions that are offered and recommended by the Charities Commission with a view to presenting a new Constitution at the AGM in March. I am not proposing any fundamental changes in the nature of what we do or who we are but simply taking advantage of the opportunity to bring our Constitution up to date, to rectify some omissions and to make management more streamlined and efficient.

If anyone has any views on a new/modified Constitution please let me know.

I am hoping to have a draft available for distribution with the next edition of *The Nottinghamshire Historian* which should be available about the 19th of February.

Committee Members

I am pleased to say that Philip Jones has agreed to attend our committee meetings and act as a liaison between ourselves and our colleagues at The Thoroton Society and I would like to extend an invitation for other groups to send representatives to our meetings. More to the point we need some new members to join the committee and take on some of the existing workload as well as developing the Association in the future. New members should be formally elected at the AGM and will need to be nominated in advance, however anyone who is interested can offer themselves informally and be co-opted onto the committee subject to formal election at the following AGM (that's how I got involved back in 2010). Please be aware that adoption of a new Constitution will mean some changes in the way that committee members are appointed and the roles that they can take on. Anyone who is interested in getting involved please let me know.



NLHA EVENTS



NLHA Spring Dayschool 2016 and AGM - Landscape History

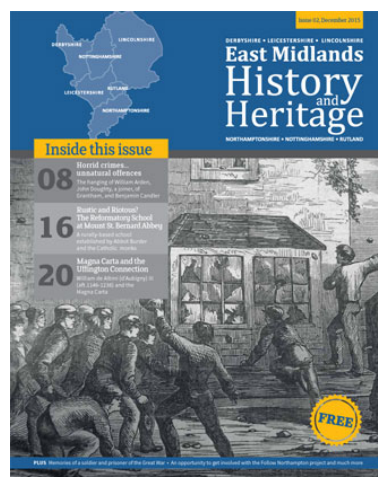
19th March 2016 at Ravenshead Village Hall commencing at 9:30 until 4:00. Steph Mastoris on The Welbeck Atlas, Steven Hollowell on Researching and Claiming Lost Ways, Stephen Walker on Moor Ponds Woods, Chris Brooke on Remote Sensing.

Steph Mastoris began his museum career in Nottingham in the late 1970s and since then has also worked in Leicestershire and Wales. He is currently Head of the National Waterfront Museum in Swansea and Acting Director of Operations for the National Museum of Wales. Steph has just completed a 15-year long research project to prepare a scholarly edition of the Welbeck Atlas for publication by the Thoroton Society's Record Series.

Dr Steven Hollowell is a local historian with a particular interest in inclosure records but is also an experienced Public Rights of Way Consultant. He has acted as expert witness in a number of important legal actions and has published a number of books dealing with history and access to the countryside. He is currently working on a book on Lost Ways.

Dr Christopher Brooke is Hon. Associate Professor of medieval church history and church archaeology at the University of Nottingham where he is joint editor for the Southwell and Nottingham Church History project. He is also an Hon. Research Fellow at the University of Durham where he continues to develop ground-based and aerial remote sensing techniques for use in archaeology and the study of historic buildings.

Read more.



You may already have seen issue 01 of EAST MIDLANDS HISTORY AND HERITAGE. Issue 02 will be available **FREE** at the DaySchool. Editor Nick Hayes will also be on hand to talk about the magazine and www.eastmidlandshistory.org.uk.



LOCAL SOCIETY EVENTS



On the Buses, East Bridgford LHG

A history of buses in the Nottingham area presented by Peter Hammond on 2nd February 2016 at East Bridgford Methodist Church commencing at 7:30pm.

[Read more.](#)

Derbyshire's Castles, Nuthall and District HS

Presented by Robert Mee on Tuesday 2nd February 2016 at St Patrick's Church Hall commencing at 7:30pm.

[Read more.](#)

AGM, West Bridgford & District LHS

AGM on Friday 5th February 2016 at 7:30pm at West Bridgford Lutterell Hall to be followed by members old photographs of West Bridgford.

[Read more.](#)



Life and Death in the Anglo-Saxon Midlands, University of Nottingham Museum

Come and discover life in the East Midlands during the Anglo-Saxon period with a gallery tour and handling session at the University of Nottingham Museum on Saturday 6th February 2016 between 11:30am and 1:00pm and again between 2:00 and 3:30pm. Age 10+. Cost £2. Book online at www.lakesidearts.org.uk or phone 0115 846 7777.

[Read more.](#)



Dams to Trams, Angel Row History Forum

Between 10:00 and 12:00 on Tuesday 9th February 2016 at Nottingham Local Studies Library Gareth Davies of Trent and

Peak Archaeology will give an illustrated talk.

[Read more.](#)



Coins in the University Museum, Numismatic Society

Presented by University Museum Numismatist Anja Rohde on Wednesday 9th February 2016 at Lakeside Arts Theatre commencing at 7:00pm.

[Read more.](#)



Terror from the Skies, Stapleford and District LHS

On Tuesday 9th February 2016 at St Helen's Church Hall commencing at 7:00pm Stephen Flinders will tell the story of the night when the zeppelins came. FOR THIS AND SUBSEQUENT MEETINGS PLEASE NOTE THE CHANGE OF DAY FROM WEDNESDAY TO TUESDAY AND THE CHANGE OF VENUE FROM MAYFIELD HALL TO ST HELEN'S CHURCH HALL

[Read more.](#)

Caves of Nottingham, Burton Joyce & Bulcote LHS

Presented by David Strange-Walker on Tuesday 9th February 2016 at Burton Joyce Carnarvon Room commencing at 7.30p.m. Admission for non-members is £2.00.

[Read more.](#)

AGM, Friends of Nottingham Museums

AGM followed by a talk from a member of the City Museums' staff. There is a regular programme of talks, visits to galleries and historic sites and all members receive a quarterly newsletter. Non-members are welcome at an extra charge of £2 (normal entry to The Castle applies). For further information telephone 0115 9221734. For membership enquiries telephone 0115 9283688.

[Read more.](#)

The Lost Pilgrim Chapel, Retford and District H&AS

Presented by Vicki Score on Wednesday 10th February 2016 at Retford Chapelgate Hall commencing at 7.30p.m.

[Read more.](#)

Grantham Canal, Lenton LHS

Presented by Rosemary Gibson on Wednesday 10th February 2016 at Dunkirk Community Centre commencing at 7:30pm.



[Read more.](#)

Who Buried the Paupers?, Farnsfield LHS

On Wednesday 10th February 2016 at the Lower Hall of Farnsfield Village Centre commencing at 7:30pm Karen Winyard from Southwell Workhouse will tell who buried the paupers, who paid for the funerals and where they were buried.

[Read more.](#)



The Boots Archive,

The Thoroton Society

On Saturday 13th February 2016 at 2:30pm at the Nottingham Mechanics Sophie Clapp (Archivist, The Boots Company) will deliver the Nora Withal Lecture.

[Read more.](#)



The Roman Southwell Community Project, Arnold LHG

Presented by Matt Beresford on Tuesday 16th February 2016 at Arnold Labour Club commencing at 7:00pm.

[Read more.](#)



Antonine Wall: using (and losing) money on the edge of empire, University of Nottingham Museum

On Wednesday 17 February 2016 Richard Abdy will give a talk on coin finds and how money was supplied and used on a daily basis on the frontiers of the Roman world. Talks will be followed by handling sessions and discussions with the speaker in the University Museum. This is a FREE event but please book your place in advance at www.lakesidearts.org.uk or phone 0115 846 7777.

[Read more.](#)

Alabaster Monuments in Churches, East Leake & District LHA

Presented by Ray State on Wednesday 17th February 2016 at East Leake St. Mary's Church Hall commencing at 2.00p.m.

[Read more.](#)

Witches of Nottinghamshire, Edwinstowe HS

Presented by Christine Davis on Wednesday 17th February 2016 at St Mary's Church Rooms, Edwinstowe commencing at 7:30pm

[Read more.](#)



Sidney Race's Nottingham Nights, Beeston & District LHS

Beeston and District Local History Society On Wednesday 17th February 2016 Ann Featherstone presents fascinating glimpses from a journal of Edwardian Nottingham entertainment at Chilwell Memorial Hall commencing at 7.30p.m.

[Read more.](#)

Law and Order, Bingham & District LHS

Presented by Bob Massey on Thursday 18th February 2016 at Bingham Old Courthouse commencing at 7.15p.m.

[Read more.](#)

The Forgotten Few: Bleaseby Bombers' Crash, Woodborough LHG

Presented by Ken Ogilvie on Thursday 18th February 2016 at The Institute Woodborough commencing at 7.30p.m.

[Read more.](#)



Southwell Workhouse, Coddington HG

Presented by Colin Deeley on Thursday 18th February 2016 at Coddington Village Hall commencing at 7.30p.m. Everyone welcome. Members FREE. Non-members £2 - includes refreshments

[Read more.](#)



February Local History Seminar, University of Nottingham

On 20 February 2016 at Lenton Grove on the University of Nottingham's University Park campus commencing at 10:00am the first of two sessions entitled The East Midlands and the Influenza Pandemic of 1918-19 will be presented by Dr. Joan Knight. The second session entitled Methodism in Nineteenth century South Nottinghamshire will be presented by Dr. Anne Woodcock

[Read more.](#)



Nottingham Townhouses, Lambley HS

A presentation by Pete Smith on Monday 22nd February 2016 at Lowdham WI Hall commencing at 7:30pm. Nottingham is not usually thought of today as an important eighteenth century metropolis, but before the Industrial Revolution it was considered by some visitors to be one of the finest towns in England.

[Read more.](#)

A Walk around Elston, Pentagon LHS

Presented by Ivor Walker on Wednesday 24th February 2016 at Elston Village Hall commencing at 7.30p.m. Members £1.50, non-members £2.00.

[Read more.](#)



Wollaton Hall: Comfort and Security in the 19th Century, Wollaton H&CS

Presented by Pete Smith on Wednesday 24th February 2016 at
Wollaton St. Leonards Community Centre commencing at 7.30p.m.

[Read more.](#)



From Workhouse to Welfare, Southwell and District LHS

Presented by Katherine Onion on 24th February 2016 at The Old
Court House, The Burgage, Southwell commencing at 7:30pm.

[Read more.](#)



Life and Death in the Anglo-Saxon East Midlands, University of Nottingham Museum

Come and discover life in the East Midlands during the Anglo-Saxon period with a gallery tour and handling session at the University of Nottingham Museum on Thursday 25th February 2016 between 1:00am and 2:30pm. Age 10+. Cost £2. Book online at www.lakesidearts.org.uk or phone 0115 846 7777.

[Read more.](#)



Flint Knapping, University of Nottingham Museum

Craft class for families and children aged 10+ on Saturday 27th February 2016 between 11:00am and 1:30pm in the Rehearsal Hall. Cost £20 (£10 concessions), £4 children. Numbers limited to 15 per class. Book online at www.lakesidearts.org.uk or by phone 0115 846 7777

[Read more.](#)



NEWS

Nottinghamshire Archives

Due to the building project and use of online resources Nottinghamshire Archives no longer require the following:

- National Probate Indexes (large hardback books) 1944 - 1968
- National Probate Indexes (fiche) 1858 – 1943 & 1973 – 1998

Anyone who is interested should contact Ruth Imeson on 0115 97 75692 or email ruth.imeson@nottscc.gov.uk



Notts Miners of African-Caribbean Heritage

Did you know that hundreds of African-Caribbean men worked in many of the forty-two coal mines in Nottinghamshire

alongside miners from diverse nationalities, localities and age groups.

Many African-Caribbean Men worked at Gedling, Clifton and Babbington collieries however, until now, no research has explored or recorded the experiences of these men.

[Read more.](#)

The Vikings of Sherwood

Mercian Archaeological Services CIC, The Friends of Thynghowe, The Public Research Organisation, and the Forestry Commission England are proud to announce a series of FREE workshops and a FREE community excavation as part of the VIKINGS OF SHERWOOD project.

Thynghowe is believed to be a Viking age site in Sherwood Forest. On the hill of Thynghowe are mysterious earthworks that may have been used for meetings by Sherwood's Viking Settlers. This project will give you the chance to learn more about this site and to be involved in an archaeological excavation.

[Read more.](#)



Robin Hood Bus Tours

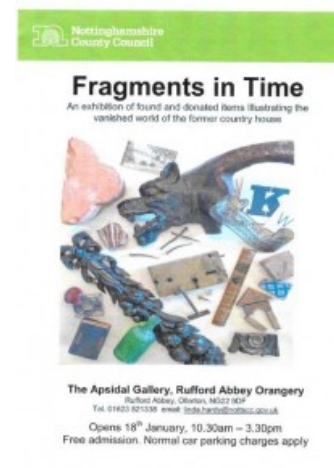
Mercian are very pleased to announce that the Robin Hood Express is returning in 2016 for 4 historic bus trips around Sherwood Forest from Nottingham. The tour links expert commentary from Mercian's Andy Gaunt, with a trip on board a 1960s Routemaster London Bus driven by Clay Pipe Specialist Peter Hammond, and visits to Four sites- Rufford Abbey, Sherwood Forest National Nature Reserve and the Major Oak - legendary hideaway of Robin Hood, King John's Palace, and Newstead Abbey. With talks and tours on foot by our experts.

[Read more.](#)

Fragments in Time, Rufford Abbey

An exhibition of found and donated items illustrating the vanished world of the former country house in the Apsidal Gallery at Rufford Abbey. Opens on 18th January 2016, 10:30am to 3:30pm. Admission is free, normal car parking charges apply.

[Read more.](#)



Thomas Helwys

An event to mark 400 Years since the death in Newgate Prison of Thomas Helwys Founder of the Baptist denomination, Pioneer of Religious Liberty for All. 10.30am, 12th March 2016, at The Well, Hospital Road, Retford

Helwys was from a north Nottinghamshire family and probably born at Askham. The family held lands there, at Saundby and in Lincolnshire. His uncle Gervase was governor of the Tower of London but was executed after an important prisoner was poisoned. Thomas moved to Broxtowe Hall but became a friend of the puritan and separatist, John Smyth, and helped finance the escape of the 'Pilgrims' to the Netherlands in 1608. There, Smyth and Helwys became Baptists but Helwys felt called by God to return to England to start an illegal Baptist church – the first congregation of the Baptist denomination. He also wrote the first book in English to argue that all people should have freedom of religion, for which he was imprisoned by King James and was never released. The message of freedom was taken up by other Baptists, such as John Murton of Gainsborough, and taken to America by Roger Williams who was married to Mary Bernard, daughter of Helwys's friend who had been vicar of Worksop.

[Read more.](#)



AND FINALLY

Important Dates for 2016

Angel Row History Forums: Tuesday 9th February, Tuesday 10th May, Tuesday 2nd August, Tuesday 1st November.

NLHA Spring Day-School and AGM - Saturday 19 March 2016

NLHA Autumn Day-School - Saturday 22 October 2015

NLHA Committee Meetings: Tuesday 19 January 2016, Tuesday 19 April 2016, Tuesday 19 July 2016, Tuesday 18 October 2016

Great Nottinghamshire Local History Fair (Mansfield) - Sunday 8 May 2016

News and Events

We are happy to publish any news or events, from individuals or groups, **regardless of whether or not they are NLHA members**, as long as the topic relates to Nottinghamshire local history. Please send material by email to chairman@nlha.org.uk.

Different Versions

This newsletter has been generated as an e-newsletter that can be viewed either as an email attachment or via your browser as a web-page. **IT CAN ALSO BE MADE AVAILABLE AS A PDF FILE.** Please contact me if you need the newsletter in a PDF version.

John Parker, Chairman & Newsletter Editor: chairman@nlha.org.uk

Chris Weir, Vice-chairman & Youth Co-ordinator: vicechairman@nlha.org.uk

David Anderson, Treasurer & Membership Secretary: treasurer@nlha.org.uk

Sarah Seaton, Editor, *Nottinghamshire Historian*: editor@nlha.org.uk

Jenny Page, Membership Promotion: youth@nlha.org.uk

Susan Griffiths, origination, *Nottinghamshire Historian*: web@nlha.org.uk



Email us at:

chairman@nlha.org.uk



Like us at:

www.facebook.com/nottslocalhistory/



See us at:

www.nlha.org.uk