



# Nottinghamshire Local History Association

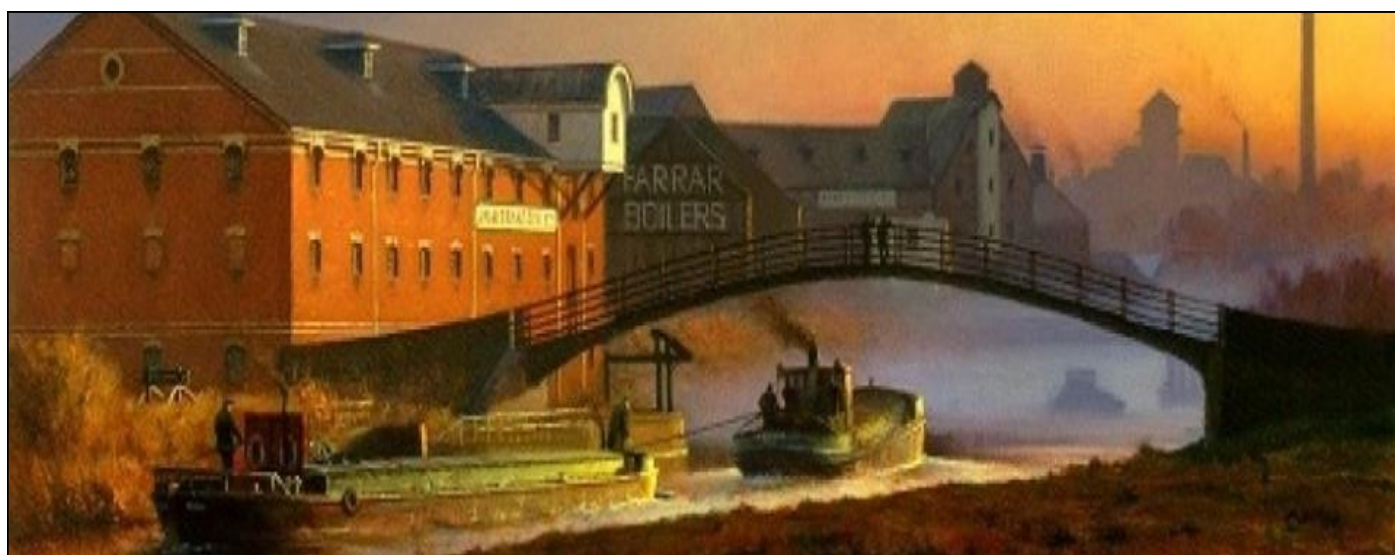


**Working together ~ what we do best.**

Volume 1, Issue 7

February 2014

## NLHA Spring Day School A River Runs Through It: The Trent And Its Communities.



NLHA SPRING DAY-SCHOOL Saturday 22nd March 2014 10am till 4.15pm The Village Hall, Ravenshead, Nottingham NG15 9BN

Last year historians from the University of Nottingham began work with the Newark Heritage Barge charity on the history of the Trent since the Industrial Revolution. Much has been learnt about the lives of those who worked on and alongside the river during this formative period in its history.

PHILIP RIDEN will speak about trade and traffic; HYWEL MASLEN about the Waterways Archives; WENDY FREER about life on board boats; and HES KAPUR & LES REID about the Charity and the 'Leicestershire Trader'

£7.00 for NLHA members

£8.00 for non-members

More details from David Anderson at 01509 820067

### WEBSITE:

[www.nlha.org.uk](http://www.nlha.org.uk)

### FACEBOOK

[www.facebook.com/nottslocalhistory](https://www.facebook.com/nottslocalhistory)

### Lace, Ladies and lawbreakers -

### International Women's Day walk

15th March 2014: 2pm Meet at the left lion in market square - out door event

A new walk from the Nottingham Women's History Group. We'll be walking around the lace market learning about women's lives. Wheelchair accessible, approx 1 hr. Cost: £2 donation request.

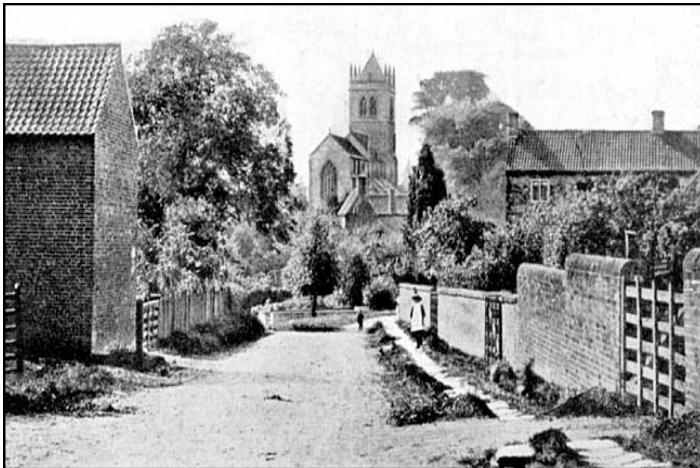
[www.nottinghamwomenshistory.org.uk](http://www.nottinghamwomenshistory.org.uk) or  
facebook, [nottmwomenshistory@gmail.com](mailto:nottmwomenshistory@gmail.com),  
Mo 07950 472022

## Laxton History Group's Project wins Heritage Lottery Fund Support

Today, Laxton History Group has received £31,400 from the Heritage Lottery Fund to support their project **"A Snapshot in Time, Laxton in peace and at war (1900 -1920)"**. Professor John Beckett, Nottingham University says "This is an extraordinary opportunity to find out more about this unique English village and to recreate the lives of the villagers at the turn of the century until after the First World War".

During those years not only was the nation gripped by World War I but Laxton itself underwent a major re-organisation of its strip farming system. The project will uncover the impact on village life of the great changes wrought by the war and by the politics of the day. It is a fantastic opportunity for the people of Laxton to come together and document part of the history of this unique village.

Laxton remains remarkable as England's last open field farming village managed by a Court and Jury, a survival of a farming system which has long passed away across most of Northern Europe and it gets visitors from all over the world. The History Group, all volunteers from the local community, aim to produce booklets about the village, put new information on the web site, and to work with local teachers to produce educational materials for use in schools and by the general public. The volunteers will have the opportunity to take part in all aspects of the research and the presentation of the materials and they will be encouraged to make the most of training opportunities provided by the project, such as computer use,



Laxton Village Source:nottshistory.org.uk

preparing displays and organising events for people of all ages.

Commenting on the award, Roger Cottee, Project Leader said: "We are thrilled to have received the support of the Heritage Lottery Fund and we are confident that the project will give us an opportunity to work together to help to preserve Laxton's unique heritage and to make it more widely available locally, nationally and internationally.

We know many people still living in Nottinghamshire and nearby have connections with Laxton and we are looking forward to making contact with as many as possible to discover the photographs, diaries, letters and other items they may have which will shed light on the village of 100 years ago."

Laxton History Group (LHG) was established in 2008 and involves both villagers and others interested in its history. It always welcomes information about the village from anyone who has lived there or had relatives living and working in the village in the past.

[www.laxtonhistorygroup.org.uk](http://www.laxtonhistorygroup.org.uk)

The HLF Funded project will be promoted with a speaker and display at Laxton Heritage Weekend ([www.laxtonheritage.org.uk](http://www.laxtonheritage.org.uk)) on June 28<sup>th</sup> and 29<sup>th</sup> 2014. All contributions of information to the project will be warmly welcomed then or at any time.

Head of the Heritage Lottery Fund East Midlands, Vanessa Harbar welcomed the project: "We look forward to seeing this project underway, Laxton has a truly unique surviving medieval farming history and the volunteers of Laxton History Group have presented exciting plans to share it with the wider community."



Map of Laxton :Source:nottshistory.org.uk

### **Dr James Smith awarded CBE for services to Holocaust education and genocide prevention.**

Dr James Smith, Co-founder and President of the National Holocaust Centre & Museum was made a Commander of the Order of the British Empire (CBE) in the New Year Honours by Her Majesty the Queen – for services to Holocaust education and genocide prevention.

Statement from Henry Grunwald OBE QC – Chair of Board of Trustees

*This well-deserved Honour is a wonderful recognition of James' remarkable achievements for both the National Holocaust Centre & Museum and the Aegis Trust. It is also yet another acknowledgement of his equally remarkable family, following previous awards to his mother and brother. I and the Centre are immensely proud of James and look forward to all that our President will continue to do for us in the years ahead.*

### **Commission for Holocaust remembrance and education in the UK**

Prime Minister David Cameron launched a Commission to investigate possible further measures for Holocaust remembrance and education in the UK on 27th January 14 marking Holocaust Memorial Day.

Members of the Commission will include actress Helena Bonham Carter, broadcaster Natasha Kaplinsky and Chief Rabbi Ephraim Mirvis,

alongside senior cross-party representation from Ed Balls, Michael Gove and Simon Hughes. Dr James Smith CBE, Chief Executive of the Aegis Trust for genocide prevention, and Henry Grunwald OBE QC, Chairman of the National Holocaust Centre and Museum, are among the experts appointed to the Commission's working groups on education and commemoration. Prime Minister David Cameron said: "We face a real danger that, as the events of the Holocaust become ever more distant, they feel increasingly remote to current and future generations. This cross-party, national Commission representing our whole society will investigate what more needs to be done to ensure Britain has a permanent and fitting memorial and the educational resources needed for generations to come."

"It's a privilege to be appointed to advise the Prime Minister's Holocaust Commission for remembrance and education in the UK," says Dr James Smith, who is also the President of the Holocaust Centre. "The National Holocaust Centre in Nottinghamshire educates over twenty thousand young people every year, yet there remains a huge amount more that can and should be done. When we were building the Holocaust Centre twenty years ago, my brother Stephen and I believed strongly that there should be political will and profile at the highest level to perpetuate the remembrance of the greatest catastrophe of the Twentieth Century. The Prime Minister's creation of this Commission is a welcome mark of commitment to achieving this."



Source: The Holocaust Centre



### Nottingham Caves Survey

The Nottingham Caves research team in Nottingham has developed a new mobile phone application to allow people to explore the city's caves from above ground. Nottingham has one of the largest network of man-made caves in the UK, but most are not accessible. This app will enable the user to have their own tour of places that are currently closed to members of the public

"We hope to bring the caves back to the people so they can realise what they offer," David Strange-Walker, of the Nottingham Caves Survey, said.

The free application should be available by the end of February.

Some of the city's 450 caves are located underneath pubs and some can be accessed from the pub cellars. The Peel Street survey shows a huge network of caves that is little known by Nottinghamians.

Mr Strange-Walker said the application would have a map function to allow people to locate the caves and a panoramic view of the caves showing what they look like inside. They are also accessible via the website and YouTube.

<http://nottinghamcavessurvey.org.uk/>



*Nottingham Castle above and below ground. Source: Nottingham Caves Survey.*

### Nottingham shines bright for Light Night 2014

Friday 28 February 2014 Various locations. Please note: Entry to the Castle will be £4 per adult, if bought in advance, or £5 on the night. Children under 16 go FREE. Tickets can be purchased now from the Nottingham Tourism Centre, on Smithy Row, and from Nottingham Castle.

**Many Nottingham venues are taking part in Light Night 2014. This visual extravaganza will illuminate the city both inside and out once darkness descends.**

The glowing programme of events include the galleries of Justice, Lace Market Theatre, The Museum of Nottingham Life and the Tourist Information Centre amongst others. There will be projections and light installations in the Market Square with magical physics buskers, games and entertainment and a Late Night Market on Smithy Row.

You can take part in a processional walk and meet the magical City Art's puppets at Sneinton Market. The Malt Cross are offering FREE entry and entertainment. And the Theatre Royal is offering a special back stage Magic Lantern Tour by Ezekial Bone.

The main focus of the event is Nottingham Castle which will have a theme associated with the centenary of World War I. On display will be a life-sized WWI tank made from recycled materials and visitors can discover the caves underneath the Castle on a secret cave tour whilst being serenaded by the World War One Choir. The iconic Robin Hood statue will be decorated with Light Night lanterns by primary school children.

The Nottingham Contemporary is also taking part. Where you can take part in making a big striped installation.

Most events are FREE, but some do include a cost and booking may be essential. Visit [www.nottinghamcity.gov.uk/lightnight](http://www.nottinghamcity.gov.uk/lightnight) for further details.



*Illuminated Nottingham. Source: [www.nottinghamcity.gov.uk/lightnight](http://www.nottinghamcity.gov.uk/lightnight)*







**John Parker** Chairman  
chairman@nlha.org.uk

**Chris Weir** Vice Chairman  
vicechairman@nlha.org.uk

**Colin Whitham** Secretary  
secretary@nlha.org.uk

**David Anderson**  
Membership Secretary  
and Treasurer  
treasurer@nlha.org.uk

**Grace Fyles** Editor,  
Nottinghamshire Historian  
editor@nlha.org.uk

**Jenny Page** Youth  
Coordinator  
youth@nlha.org.uk

**Susan Griffiths** Web  
Editor  
web@nlha.org.uk

**Sarah Seaton** News  
Reporter, Newsletter  
Editor.  
sarahnews@nlha.org.uk

[www.nlha.org.uk](http://www.nlha.org.uk)

Would you like to receive every edition of this newsletter direct to your email? If so please send your details to us. chairman@nlha.org.uk.

## Summer of Archaeology 2014

Rufford Abbey Field School 7th to 11th July 2014 weekdays only  
No cost to participate, but spaces are limited and fill up fast.

Rufford Abbey was founded in 1146 by Gilbert de Gaunt, Earl of Lincoln, and completed in 1170. It was a Cistercian abbey dedicated to St Mary the Virgin. The Cistercian monks, also known as white monks because of their white robes, believed in living an austere life, dedicating themselves to hard work and prayer. Although it was only a fairly small abbey it was moderately wealthy. It was one of the first to be affected by Henry the VIII's dissolutions in 1536, after which it passed into the hands of the Talbot family and then the Saviles to be used as a country estate. Part of the structure of the medieval abbey survives where it was incorporated into the grand house built by the sixth Earl of Shrewsbury. It is the best-preserved remains of a Cistercian abbey west cloister range in England (English Heritage).

### Archaeological Field School - Mon 7th to Fri 11th July

The Community Archaeologists will be running an archaeological field school (followed by a general volunteer excavation) to investigate some of the medieval remains, with the aim of answering some of the questions we have about the site. This week is ideal for people who want to get a proper introduction to professional excavation techniques. We will be carrying out targeted excavation on parts of the medieval ruins. The dig day will commence at 9.30am and finish at 4pm, with time for lunch in the middle. If you wish to sign up to the field school you must be able to come for all 5 days. (If you want to dig on this site, but can't make all five days of the field school, we will be running a general volunteer excavation the following week, where you may come for as many or as few days as you like.

### Volunteer Excavation - Mon 14th to Fri 18th July

This week is for anyone to join in with, although it may not be suitable for young children (please get in touch if you have children who would like to participate). We will be carrying out targeted excavation in the grounds of the medieval abbey. The dig day will commence at 9.30am and finish at 4pm, with time for lunch in the middle.

You can come for as many or as few days as you like. No experience is necessary, and places will be allocated on a first-come-first-served basis. This excavation is part of the National Festival of British Archaeology see [www.archaeologyfestival.org.uk](http://www.archaeologyfestival.org.uk)



Source: Emily Gillot, Nottinghamshire County Council