



Nottinghamshire Local History Association



Working together ~ what we do best.

Volume 1, Issue 8

March 2014

NLHA Spring Day School A River Runs Through It: The Trent And Its Communities.

Our NLHA Spring Day-School held on Saturday 22nd March at The Village Hall, Ravenshead was well attended and a resounding success. After Philip Riden's fascinating talk on Trade and Traffic on the River Trent, Hywel Maslen presented images of new sources that are available at the Waterways Archives see www.virtualwaterways.co.uk.

During lunch lead officers of the NLHA oversaw the 33rd AGM (see below). Bookstalls and refreshments were available during breaks.

After lunch Wendy Freer spoke about life on board some of the boats on the Trent in the 19th and 20th centuries, images of large families who lived and worked on the boats were a stark reminder of the conditions that were endured to make a living. It was a fascinating talk. The afternoon finished with Les Reid and his endeavours as a young child growing up around boats through to adulthood and his involvement with the Newark Heritage Barge and future plans for it.



Les Reid enthraling the audience with his talk. Source: Sarah Seaton

WEBSITE:

www.nlha.org.uk

FACEBOOK

www.facebook.com/nottslocalhistory

NLHA AGM March 2014

The NLHA's 33rd annual general meeting was held at Ravenshead on 22nd March. Lead officers were voted in; John Parker as Chairman, Chris Weir as Vice-Chairman, Colin Whitham as Secretary and David Anderson as Membership Secretary and Treasurer. Jenny Page was re elected to the committee. David Anderson gave a financial breakdown of the Associations accounts and membership which is made up of 156 Individual members and 43 Organisation/Institution members. Robert Butler and Michael Lucking of Lucking & Co. were re elected as auditors for the Association and thanked for their contribution. The NLHA's Income and Expenditure account showed a deficit of £2,004.65. This was largely due to:

- An increase in sponsorship of outreach events.
- An increase in web hosting fees.
- A drop in subscription income.
- Cancellation of the March Day School.

The Associations assets currently stand at £17,308.38

Nottinghamshire County Archives Extension and Improvement Works

Nottinghamshire Archives is pleased to announce that work to extend the strong-rooms and refurbish the public areas will commence on 31st March 2014.

They will endeavour to keep any disruption to a minimum; however, there may be times when selected collections are temporarily unavailable. On 20th October the service will close for approximately three months.

Important dates

31st March 2014 Building work commences. From this date no car parking facilities will be available.

20th October 2014 Service closures for refurbishment of public and staff areas

Early February 2015 service reopens (with no car park)

Late March 2015 – car park becomes available

May 2015 – official reopening

Why are they doing this?

Once the works are completed they will have:

- Secured enough storage to acquire historical documents for the next 20 years
- New storage area with improved standards of security, fire, flood and environmental control
- Providing two meeting rooms, with one on the ground floor
- Improved visitor facilities
- Modernised the service offer



An artists impression of the 2.5 million extension. Source: Nottinghamshire County Council

ANGEL ROW HISTORY FORUM - HURT & SON VISIT

Tuesday 29 April: 11am—12.30pm



This is a great chance to see a wonderful collection of both historic and ultra-modern knitting machines in action. G Hurt and Son are opening their doors especially for NLHA and their guests, with a guided tour of their factory on Chilwell High Road and the chance to visit their small factory shop afterwards.

They are world famous makers of the finest hand finished, knitted lace scarves and shawls.

Their collection of vintage handframe machines, designed by Rev. William Lee in 1589, work alongside the most modern knitting technology to produce exquisite fashion products evoking the Orenburg and Shetland styles. This is a free event. No booking necessary. Contact Robert Howard for more information: Email forum@nlha.org.uk Tel: 0115 9700369

Nottinghamshire Local History Fair

On Sunday 11 May 2014 the Nottinghamshire County Council Library Service will be hosting its second annual Local History Fair at Mansfield Central Library.

It will build on the success of the first such event in 2013 when 30 local history societies and heritage groups from across the county converged on Mansfield and were joined by storytellers, children's activities, and demonstrations of local crafts such as spinning and lace making. It was a real family day out and over 300 people came along to make links with local history.

A whole floor of Mansfield Library will be devoted to the fair which will also extend throughout the library. Mansfield Library is open to the public on Sundays between 11 a.m. and 3 p.m., and there is also free parking on Sundays in the Four Seasons multi-storey car park next door.

There will be live demonstrations of local crafts, storytelling, talks and other local history presentations by heritage groups — continuing to establish the Great Nottinghamshire Local History Fair as an important showcase for local history in Nottinghamshire, where local societies will find a forum to promote their work, attract new members, sell their publications, and share expertise and experiences with other groups.

Contact [Helen Fox](mailto:helen.fox@nottscc.gov.uk) for more information. helen.fox@nottscc.gov.uk

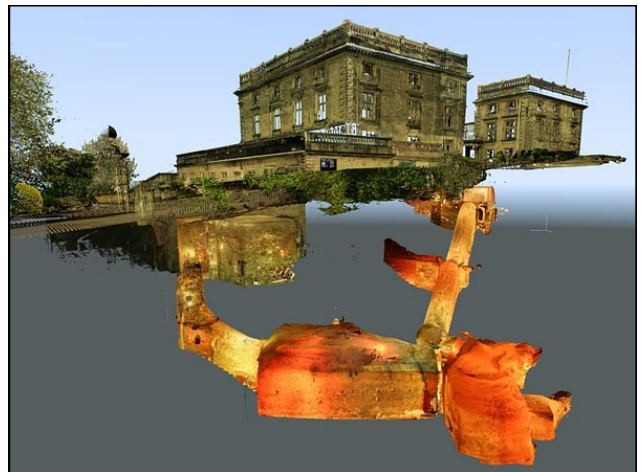
Discover Nottingham's Caves

Join David Strange-Walker of the NOTTINGHAM CAVES SURVEY to find out about the project that is making virtual tours of Nottingham's extensive sandstone cave system available online.

Floor 1, Nottingham Central Library Thursday April 3rd
6pm - 7pm. £2-50 Booking essential.

For further information and booking please contact the
Local Studies Library: Tel: 0115 9152873

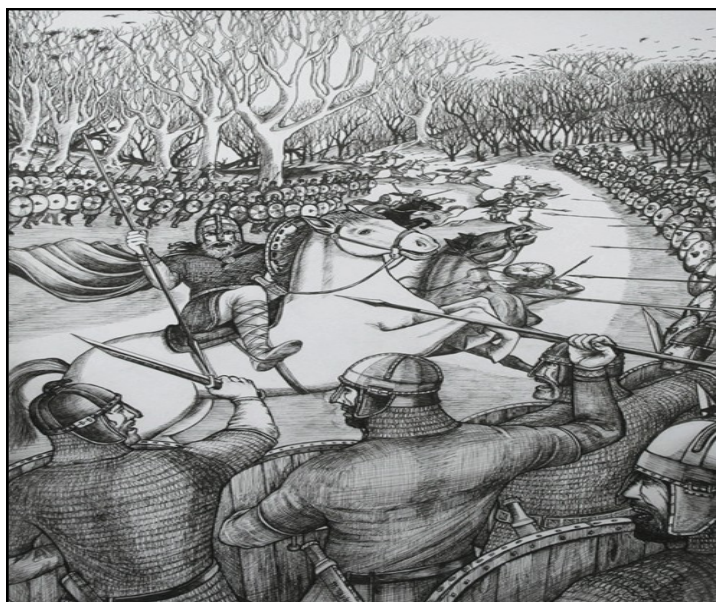
Email: local_studies.library@nottinghamcity.gov.uk



Source: <http://nottinghamcavessurvey.org.uk>

Battle of Hatfield Investigation Society

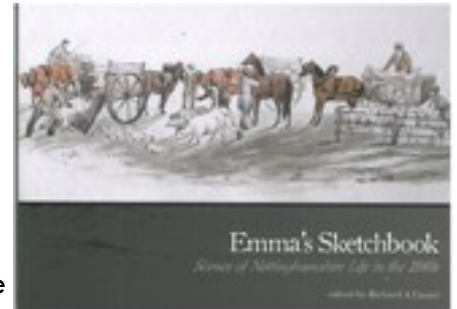
The Society's next meeting is planned for 29th May at 7.30pm at Cuckney Village Hall. In AD632 there was a fierce battle between the Northumbrians led by King Edwin against the Pagans led by Penda of Mercia and King Cadwallon of Gwynedd. The Battle is known as the Battle of Heathfield but we now know it as the Battle of Hatfield. The society aims to investigate the likelihood of Cuckney being the site of the battle. If you would like to find out more or volunteer, please come along. For more information see <http://battleofhatfield.webs.com> or contact Joseph waterfall at hcp1995@sky.com



Emma's Sketchbook

The Forgotten Dukeries Artist of the 1840's. An illustrated talk by Dr Richard Gaunt. Nottingham Central Library, Floor 1, Thursday 10th April 2pm - 3pm £2.50.

The sketches of Emma Wilmot (18720 – 1898) cover such diverse subjects as architecture, nature, animals and rural life. Together, they offer an evocative insight into Nottinghamshire during the early-Victorian period. For tickets and further information please contact Local Studies Library Tel: 0115 9152873 Email: local_studies.library@nottinghamcity.gov.uk



Nottinghamshire & Derbyshire Labour History Society and Chesterfield Labour Club

Navvies on the Dore & Chinley Railway A talk by Clive Leivers



2.00 pm, Saturday April 5th, 2014
(doors open at 1.30 pm)

at The Chesterfield Labour Club, Saltergate, Chesterfield, S40 1NF
NDLHS, 22 Boythorpe Avenue, Chesterfield, S40 2QE. 01246 270628.

hilary.cave@btinternet.com



John Parker Chairman
chairman@nlha.org.uk

Chris Weir Vice Chairman
vicechairman@nlha.org.uk

Colin Whitham Secretary
secretary@nlha.org.uk

David Anderson
Membership Secretary
and Treasurer
treasurer@nlha.org.uk

Grace Fyles Editor,
Nottinghamshire Historian
editor@nlha.org.uk

Jenny Page Youth
Coordinator
youth@nlha.org.uk

Susan Griffiths Web
Editor
web@nlha.org.uk

Sarah Seaton News
Reporter, Newsletter
Editor.
sarahnews@nlha.org.uk

www.nlha.org.uk

Would you like to receive every edition of this newsletter direct to your email? If so please send your details to us. chairman@nlha.org.uk.

Summer of Archaeology 2014

Rufford Abbey Field School 7th to 11th July 2014 weekdays only
No cost to participate, but spaces are limited and fill up fast.

Rufford Abbey was founded in 1146 by Gilbert de Gaunt, Earl of Lincoln, and completed in 1170. It was a Cistercian abbey dedicated to St Mary the Virgin. The Cistercian monks, also known as white monks because of their white robes, believed in living an austere life, dedicating themselves to hard work and prayer. Although it was only a fairly small abbey it was moderately wealthy. It was one of the first to be affected by Henry the VIII's dissolutions in 1536, after which it passed into the hands of the Talbot family and then the Saviles to be used as a country estate. Part of the structure of the medieval abbey survives where it was incorporated into the grand house built by the sixth Earl of Shrewsbury. It is the best-preserved remains of a Cistercian abbey west cloister range in England (English Heritage).

Archaeological Field School - Mon 7th to Fri 11th July

The Community Archaeologists will be running an archaeological field school (followed by a general volunteer excavation) to investigate some of the medieval remains, with the aim of answering some of the questions we have about the site. This week is ideal for people who want to get a proper introduction to professional excavation techniques. We will be carrying out targeted excavation on parts of the medieval ruins. The dig day will commence at 9.30am and finish at 4pm, with time for lunch in the middle. If you wish to sign up to the field school you must be able to come for all 5 days. (If you want to dig on this site, but can't make all five days of the field school, we will be running a general volunteer excavation the following week, where you may come for as many or as few days as you like.

Volunteer Excavation - Mon 14th to Fri 18th July

This week is for anyone to join in with, although it may not be suitable for young children (please get in touch if you have children who would like to participate). We will be carrying out targeted excavation in the grounds of the medieval abbey. The dig day will commence at 9.30am and finish at 4pm, with time for lunch in the middle.

You can come for as many or as few days as you like. No experience is necessary, and places will be allocated on a first-come-first-served basis. This excavation is part of the National Festival of British Archaeology see www.archaeologyfestival.org.uk



Source: Emily Gillot, Nottinghamshire County Council